



NOAA EXTREME WEATHER 2008 INFORMATION SHEET

<http://ecowatch.ncddc.noaa.gov/c-side>

STATE INFORMATION

Louisiana Office of Homeland Security and Preparedness	1-800-256-7036 or 225-925-7500
	www.ohsep.louisiana.gov
Louisiana Department of Transportation (www.dotd.state.la.us)	225-379-1100
National Weather Service Forecast Office (New Orleans/Baton Rouge) (www.srh.noaa.gov/lix)	504-522-7330
National Weather Service Forecast Office (Lake Charles) (www.srh.noaa.gov/lch)	337-477-5285
Louisiana State University Hurricane Center (hurricane.lsu.edu)	225-578-4813
Louisiana Office of Tourism	www.louisianatravel.com
Louisiana State Police (www.lsp.org)	225-925-6325 (*LSP from any cell phone)
Louisiana State Police Road Closure Hotline	1-800-469-4828
Louisiana Governor's Office (www.gov.state.la.us)	1-866-366-1121
Louisiana Attorney General (www.ag.state.la.us)	225-326-6705
Louisiana Department of Agriculture & Forestry (www.ldaf.state.la.us)	225-922-1234
Louisiana Department of Environmental Quality (www.deq.louisiana.gov)	1-866-896-LDEQ (5337)
Louisiana Department of Insurance (www.lidi.la.gov)	1-800-259-5300 or 225-342-5900
Louisiana Department of Wildlife & Fisheries (www.wlf.louisiana.gov)	225-765-2800
Louisiana Department of Natural Resources (www.dnr.louisiana.gov)	225-342-4500
Louisiana Department of Health and Hospitals (www.dhh.state.la.us)	225-342-9500
Louisiana Department of Social Services (www.dss.state.la.us)	1-888-524-3578 or 225-342-0286
Louisiana Department of Labor (www.laworks.net)	1-866-783-5567
US Coast Guard (8th District)	504-846-6160
Cleco Corporation (www.cleco.com)	1-800-622-6537
Entergy (www.entergy-louisiana.com)	1-800-ENTERGY (368-3749)
	Power outages: 1-800-9OUTAGE (968-8243)
Washington St. Tammany Electric Cooperative (www.wste.coop)	985-643-6612
	Power outages: 1-866-672-9773

• FOR EMERGENCIES, CALL 911 IN ALL AREAS •
 • FOR NON-EMERGENCY INFORMATION AND REFERRALS, CALL 211 •

PARISH INFORMATION

ST. TAMMANY

Emergency Management 985-898-2359
 Sheriff Department 985-898-2338

ORLEANS

Emergency Management 504-658-8700
 Sheriff Department 504-827-8505

ST. BERNARD

Emergency Management 504-278-4267
 Sheriff Department 504-271-2501

PLAQUEMINES

Emergency Management 504-297-5671
 Sheriff Department 504-564-2525

JEFFERSON

Emergency Management 504-349-5360
 Sheriff Department 504-349-5322

ST. CHARLES

Emergency Management 985-783-5050
 Sheriff Department 985-783-6807

LAFOURCHE

Emergency Management 985-537-7603
 Sheriff Department 985-532-2808

TERREBONNE

Emergency Management 985-873-6357
 Sheriff Department 985-876-2500

ASSUMPTION

Emergency Management 985-369-7386
 Sheriff Department 985-369-2912

ST. MARTIN

Emergency Management 337-394-3071
 Sheriff Department 337-394-3071

ST. MARY

Emergency Management 985-385-2600
 Sheriff Department 337-828-1960

IBERIA

Emergency Management 337-369-4427
 Sheriff Department 337-369-3711

CALCASIEU

Emergency Management 337-721-3800
 Sheriff Department 337-491-3600

JEFFERSON DAVIS

Emergency Management 337-821-2100
 Sheriff Department 337-821-2100

LAFAYETTE

Emergency Management 337-291-5075
 Sheriff Department 337-232-9211

ACADIA

Emergency Management 337-783-4357
 Sheriff Department 337-788-8700

VERMILION

Emergency Management 337-898-4308
 Sheriff Department 337-893-0871

CAMERON

Emergency Management 337-775-7048
 Sheriff Department 337-775-5111

A
 Z
 A
 I
 S
 I
 D
 O
 L

NATIONAL INFORMATION

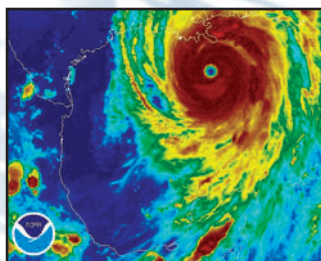
American Red Cross 1-866-GET-INFO (1-866-438-4636)
 www.redcross.org
Environmental Protection Agency www.epa.gov
Federal Emergency Management Agency (FEMA).... 1-800-621-FEMA (3362)
 www.fema.gov
National Oceanic and Atmospheric Administration (NOAA)
 www.noaa.gov
NOAA National Coastal Data Development Center www.ncddc.noaa.gov
NOAA National Climatic Data Center www.ncdc.noaa.gov
NOAA National Data Buoy Center www.ndbc.noaa.gov
NOAA National Hurricane Center www.nhc.noaa.gov
NOAA National Oceanographic Data Center www.nodc.noaa.gov
NOAA National Weather Service www.nws.noaa.gov
NOAA Coastal Services Center www.csc.noaa.gov
NOAA National Environmental Satellite, Data, and Information
 www.nesdis.noaa.gov
NOAAWatch - NOAA's All-Hazard Monitor www.noaawatch.gov
US Department of Homeland Security www.dhs.gov
U.S. Department of Commerce www.commerce.gov
National Aeronautics and Space Administration (NASA) www.nasa.gov
EPA Gulf of Mexico Program www.epa.gov/gmpo
Commander Naval Meteorology and Oceanography Command
 www.oceanographer.navy.mil/cnmoc.htm

For additional resources, updates, and real-time data see our website: <http://ecowatch.ncddc.noaa.gov/c-side>



The site provides direct linkage to local, state, and federal information as it pertains to severe weather preparation and monitoring across the Gulf of Mexico coastal region.

NOAA Satellites and Information Service (National Environmental Satellite, Data and Information Service) - NESDIS operates the satellites and manages the processing and distribution of millions of bits of data and images these satellites produce daily. The prime customer for the satellite data is the NOAA National Weather Service, which uses satellite data to create forecasts for television, radio, and weather advisory services.



RADIO STATIONS

Louisiana:

WWL 870 AM (New Orleans)	WLMG 101.9 FM (New Orleans)
WFMF 102.5 FM (Baton Rouge)	KHLA 99.5 FM (Lake Charles)
WJBO 1150 AM (Baton Rouge)	KTDY 99.9 FM (Lafayette)

Mississippi:

MS Public Broadcasting 88.1 - 91.3 FM	WXRR 104.5 FM (Hattiesburg)
WKNN 99.1 FM (Pascagoula)	WRJW 1320 AM (Picayune)
WZKX 107.9 FM (Gulfport)	WQRZ 103.5 FM (Kiln)

Alabama:

WABB 97.5 FM (Mobile)	WOOF 99.7 FM (Dothan)
WMXC 99.9 FM (Mobile)	WOPP 1290 AM (Opp)
WCSN 105.7 FM (Orange Beach)	WKMX 106.7 FM (Enterprise)

NOAA Weather Radio

Not manufactured by NOAA, NWR receivers can be purchased at many retail outlets and on the Internet

NOAA Weather Radio (NWR) All Hazards is a nationwide network of radio stations broadcasting continuous weather information directly from a nearby National Weather Service office. NWR broadcasts National Weather Service warnings, watches, forecasts, and other hazard information 24 hours a day.

162.400 MHz	162.425 MHz	162.450 MHz	162.475 MHz	162.500 MHz	162.525 MHz	162.550 MHz
-------------	-------------	-------------	-------------	-------------	-------------	-------------



Louisiana 511 Traveler Information

Louisiana 511 Traveler Information is a free service of the Louisiana Department of Transportation and Development. Travelers can dial **511** or visit www.511la.org for around-the-clock, real-time traffic updates as well as information about construction activities and weather-related road conditions simply by saying the route or region about which they are seeking information. The regions are: North West, North East, Central, South West, North Shore, South Central, and South East. In case of evacuation, information will be available through 511 on such important topics as contraflow status.

Residents without access to 511, or anyone calling from outside of the state of Louisiana, can access the 511 Traveler Information Service by calling **888-ROAD-511 (888-762-3511)**.

For more information, visit the Louisiana 511 Traveler Information website at www.511la.org.

Louisiana Department of Transportation and Development www.dotd.louisiana.gov

Participants



**Prepared by NCDDC 1-866-732-2382
 Email: NCDDC@NOAA.GOV**

Version 1.05

Published March 2008